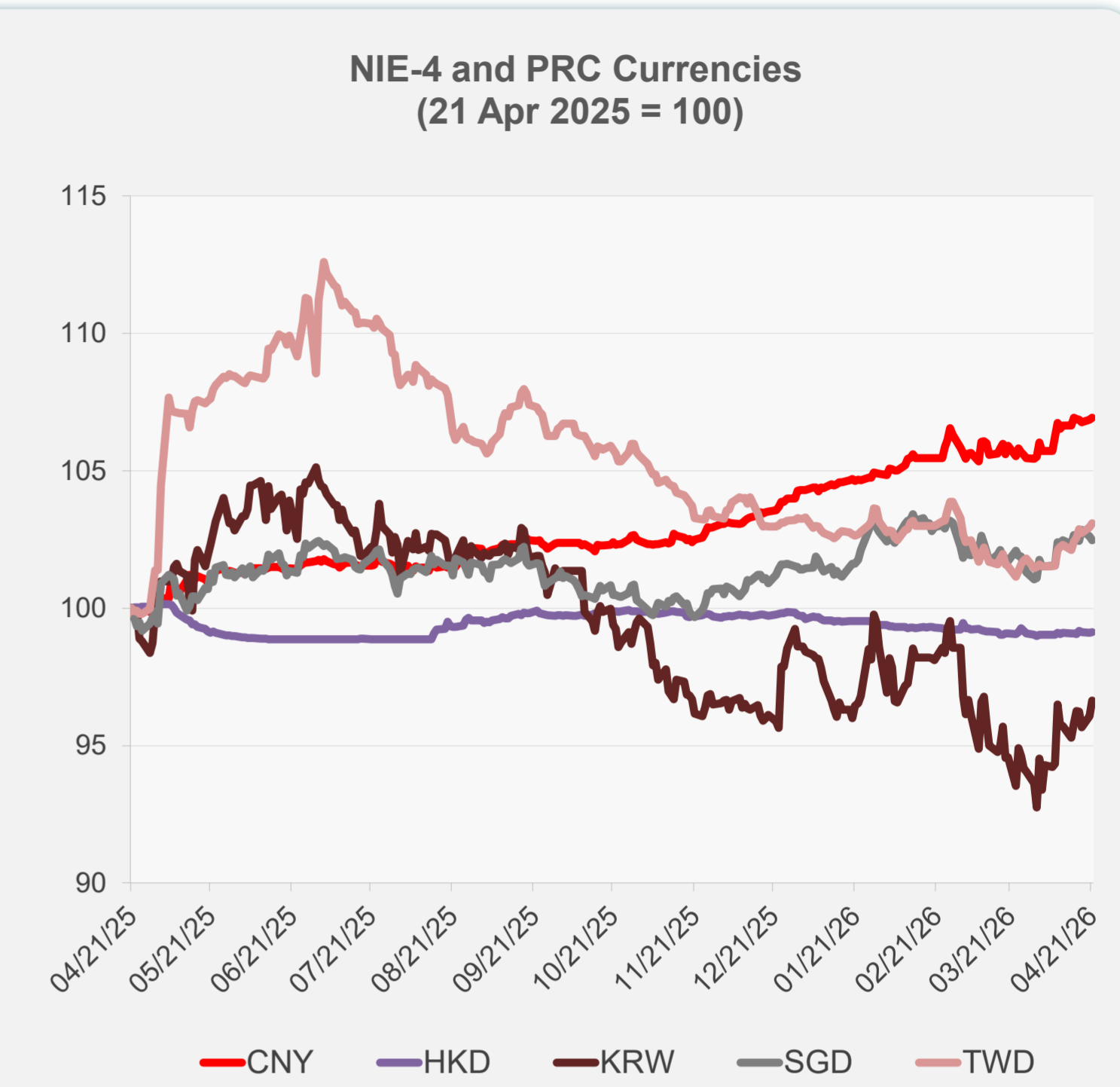
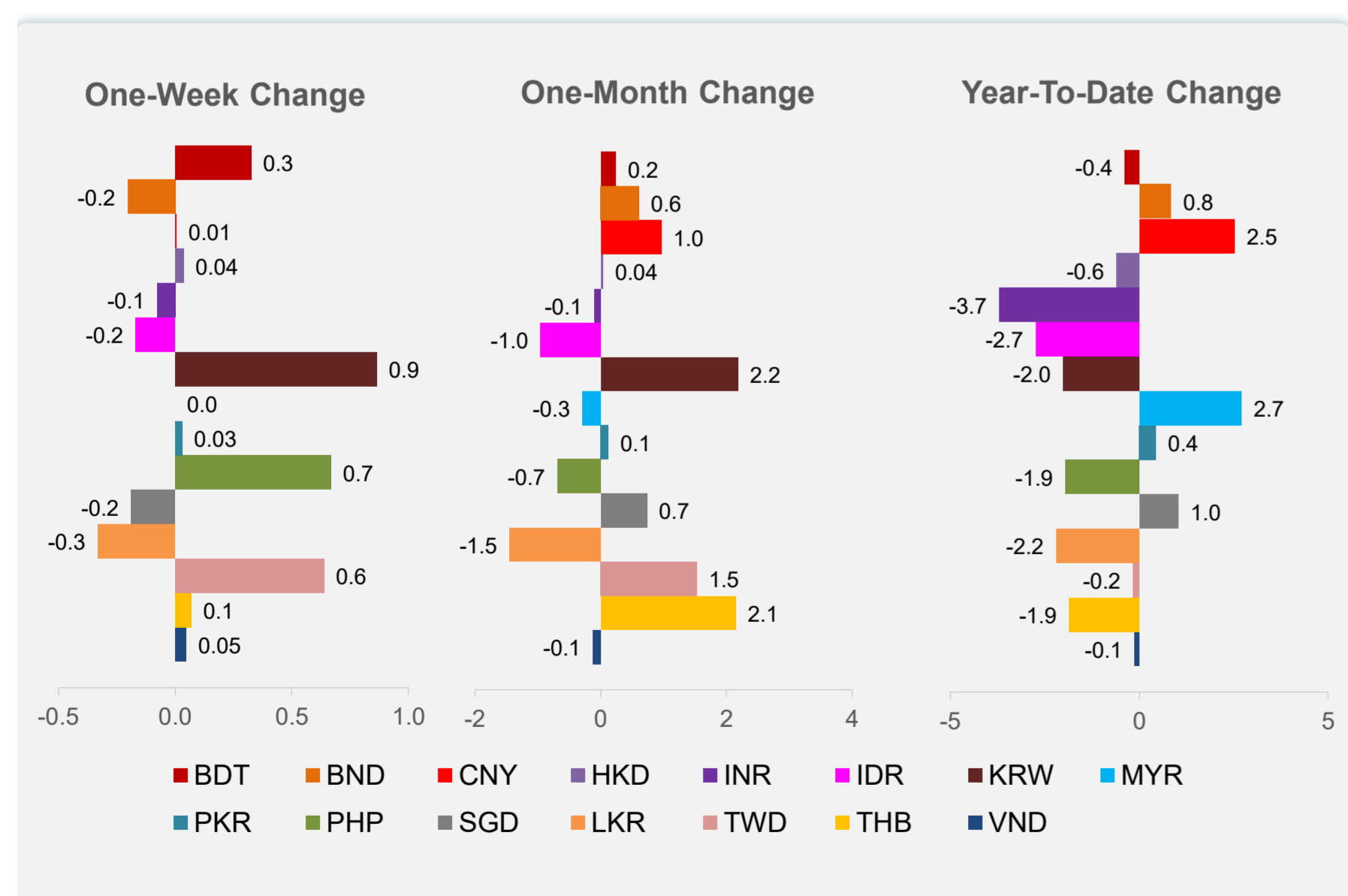
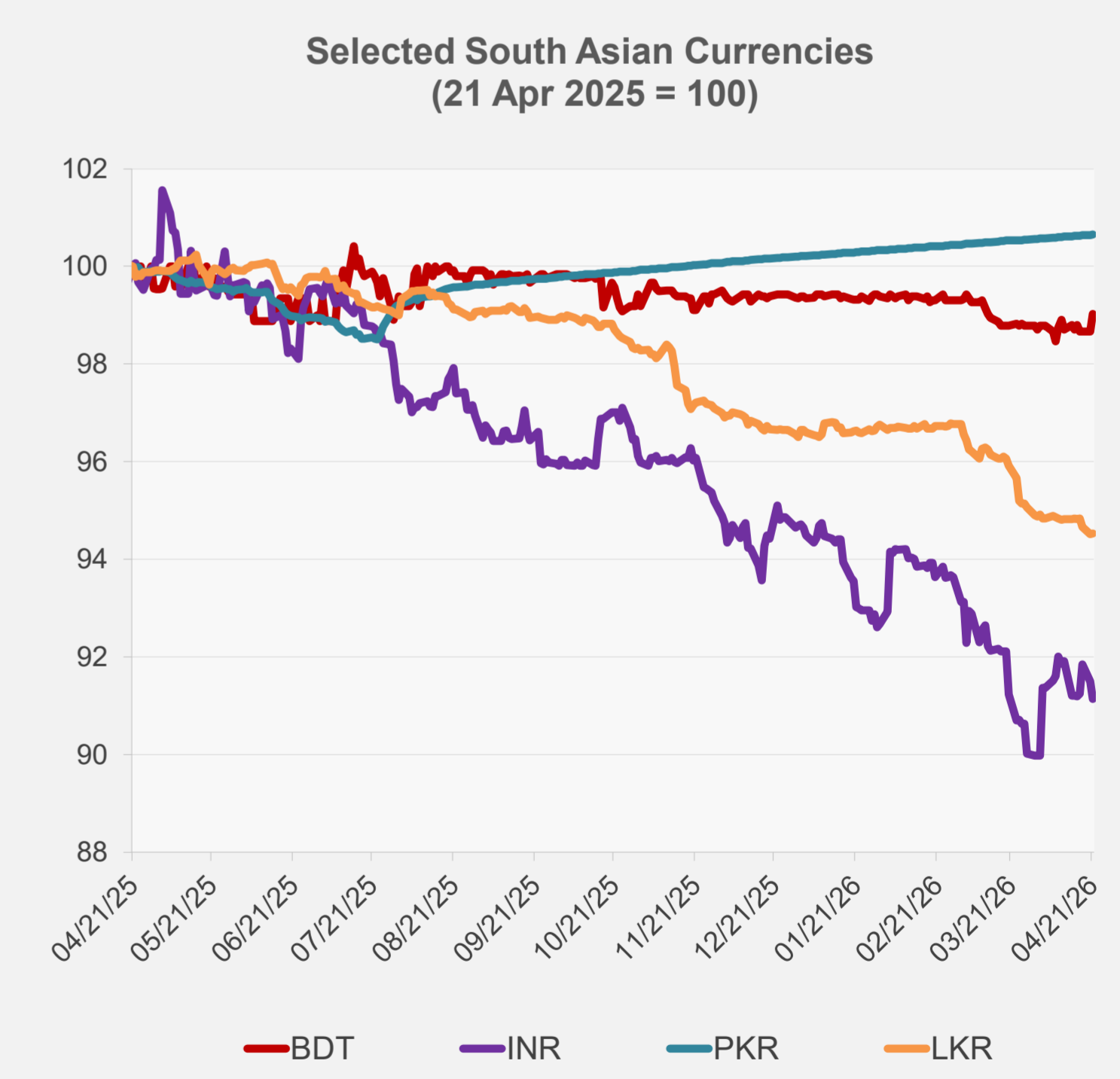
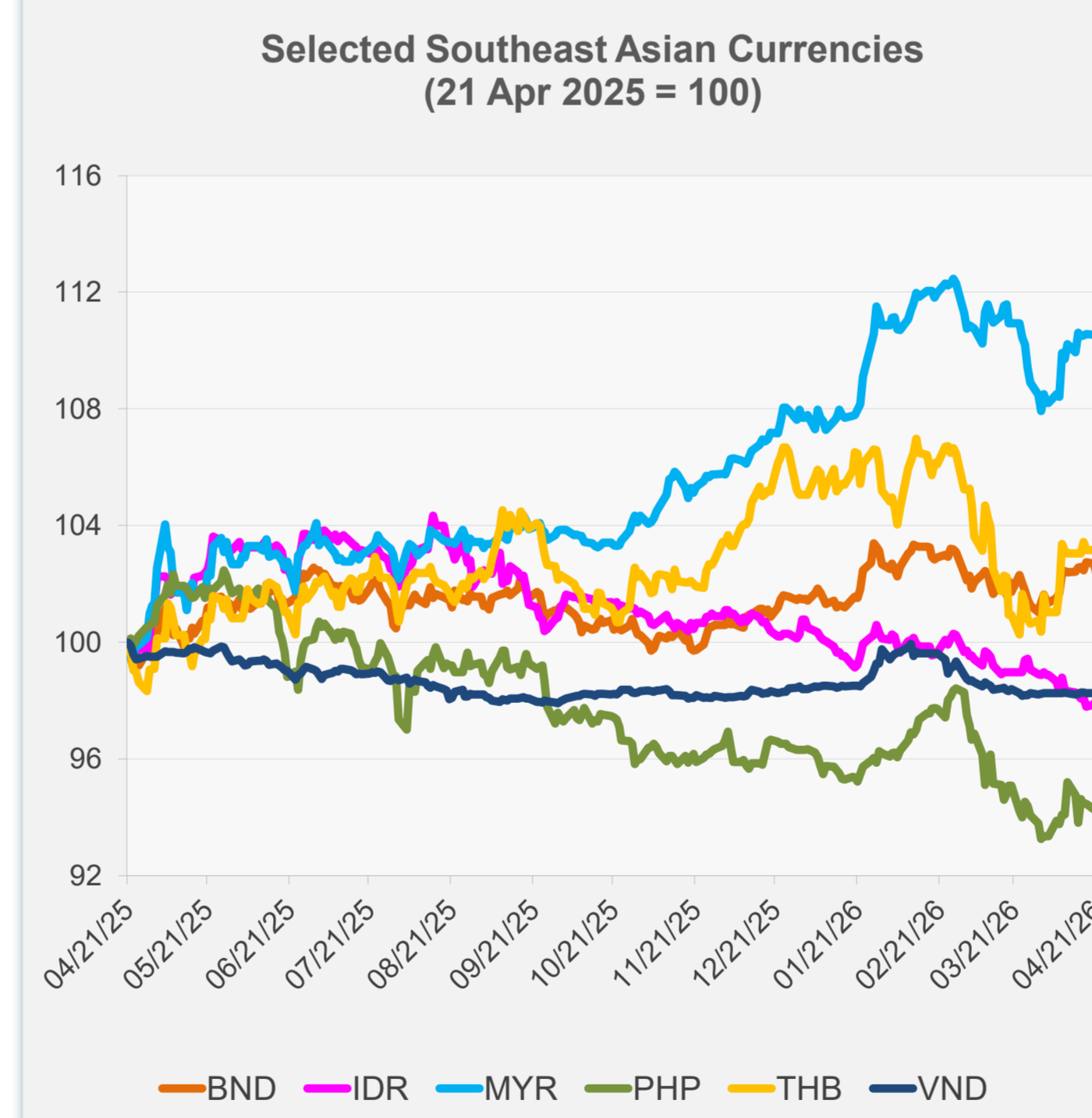


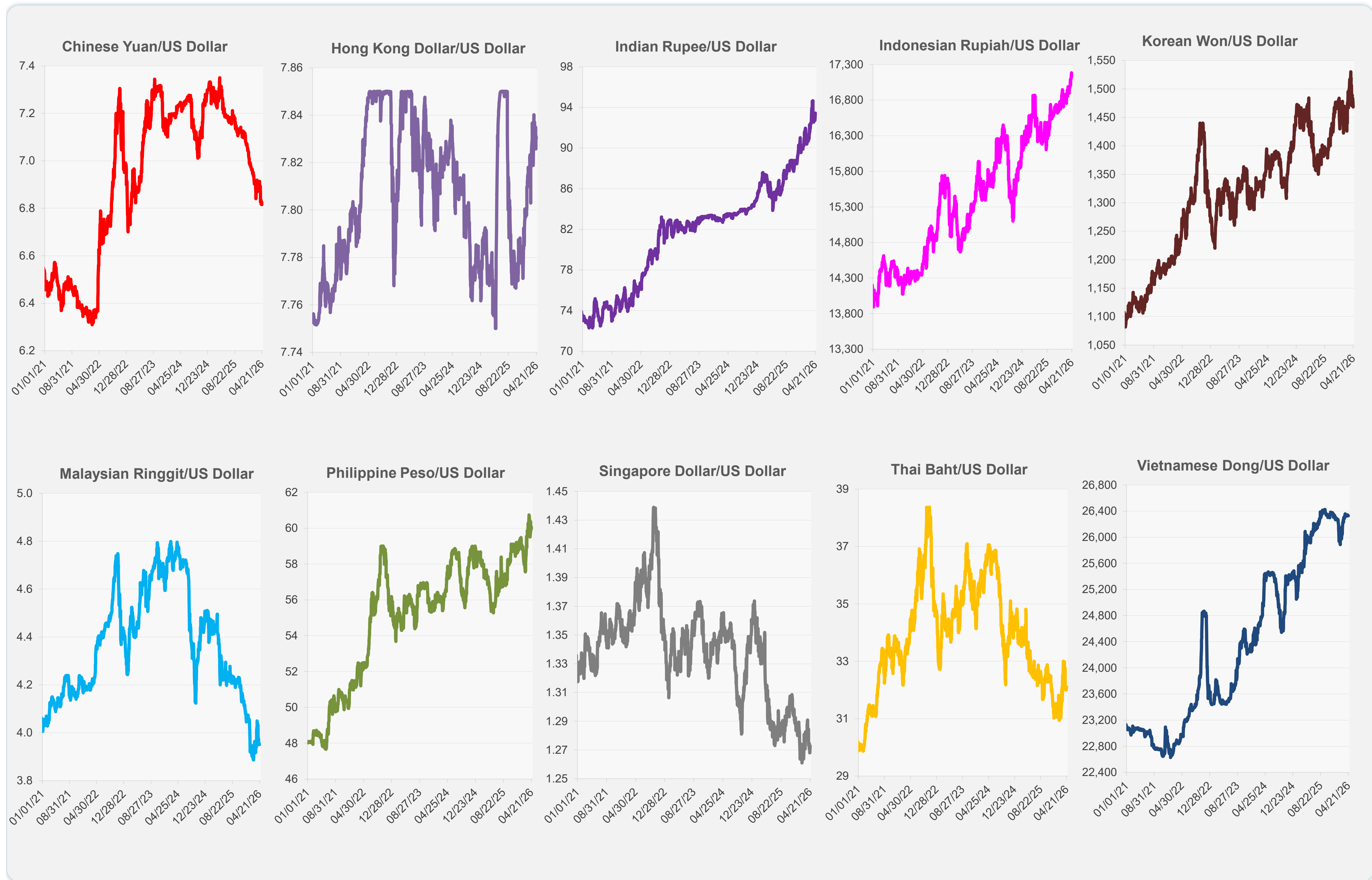
| | Latest Closing | % change from Previous Day | % change from 01-Jan-26 |
|------------------------------|----------------|----------------------------|-------------------------|
| Euro | 0.85 | -0.17 | 0.06 |
| Japanese yen (JPY) | 159.02 | -0.03 | -1.91 |
| Bangladeshi taka (BDT) | 122.70 | 0.37 | -0.37 |
| Brunei dollar (BND) | 1.27 | -0.35 | 0.84 |
| Chinese yuan (CNY) | 6.82 | 0.05 | 2.52 |
| Hong Kong dollar (HKD) | 7.83 | 0.01 | -0.59 |
| Indian rupee (INR) | 93.44 | -0.40 | -3.70 |
| Indonesian rupiah (IDR) | 17,144.00 | 0.15 | -2.74 |
| Korean won (KRW) | 1,468.50 | 0.59 | -2.01 |
| Malaysian ringgit (MYR) | 3.95 | 0.05 | 2.71 |
| Pakistan rupee (PKR) | 278.87 | 0.01 | 0.44 |
| Philippine peso (PHP) | 59.97 | 0.17 | -1.95 |
| Singapore dollar (SGD) | 1.27 | -0.16 | 1.03 |
| Sri Lanka rupee (LKR) | 316.55 | 0.02 | -2.20 |
| Taipei,China NT dollar (TWD) | 31.49 | 0.13 | -0.16 |
| Thai baht (THB) | 32.10 | -0.05 | -1.85 |
| Vietnamese dong (VND) | 26,330.00 | 0.01 | -0.11 |



NIE = Newly Industrialized Economies



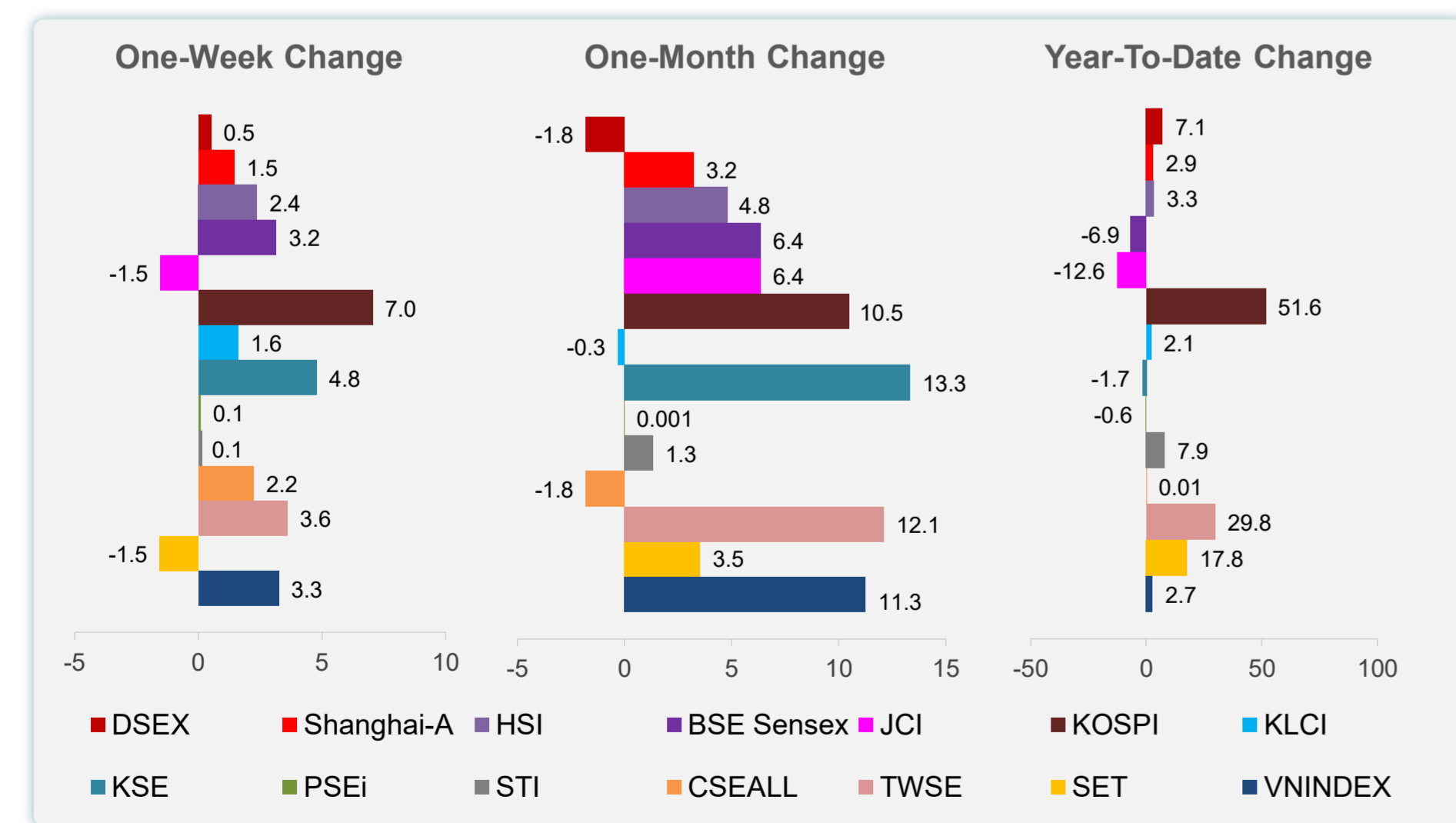
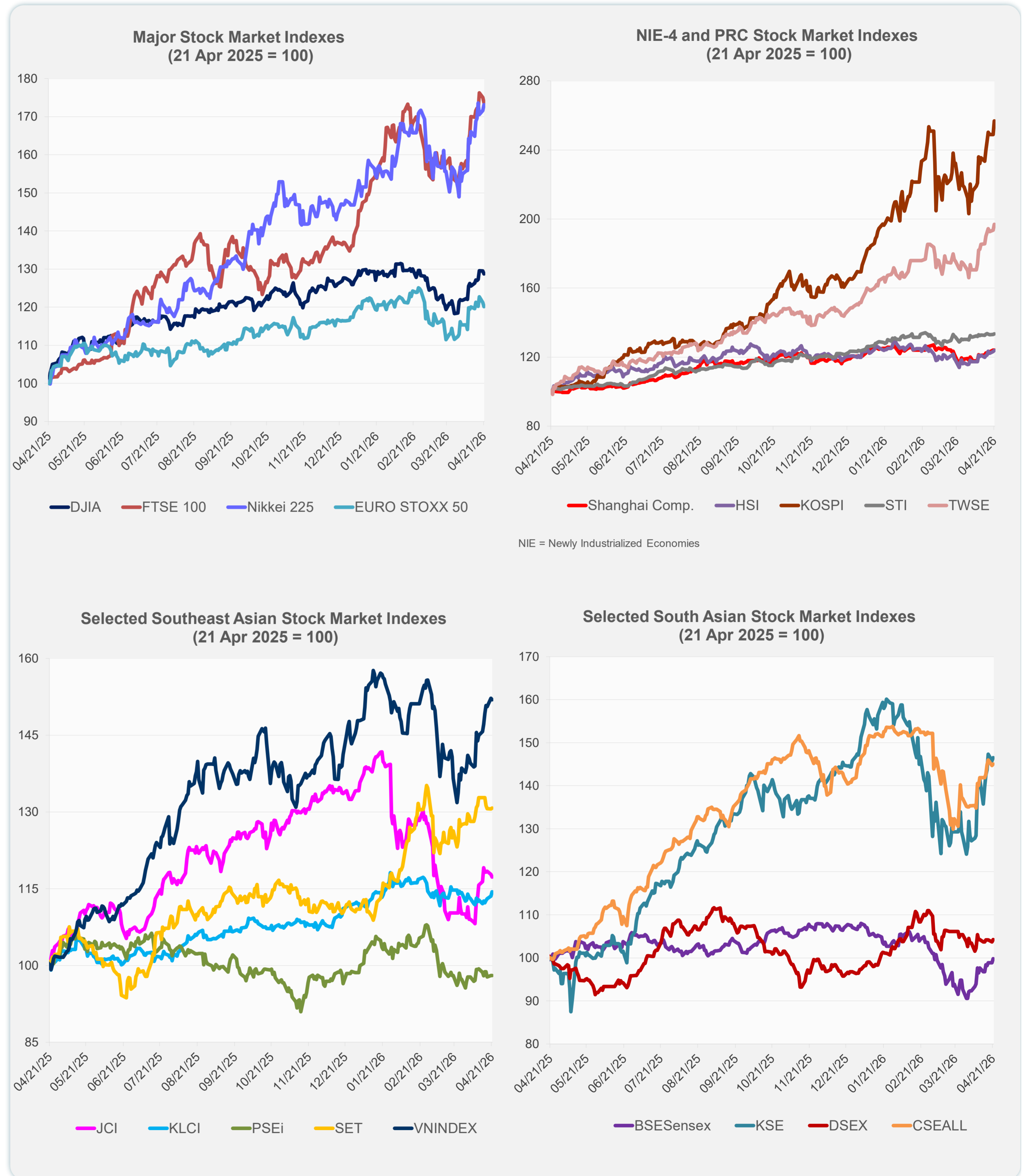
Note: Negative/Decreasing values indicate depreciation of local currency, and positive/increasing values indicate appreciation.
Source: ADB calculations using data from Bloomberg and Haver Analytics.



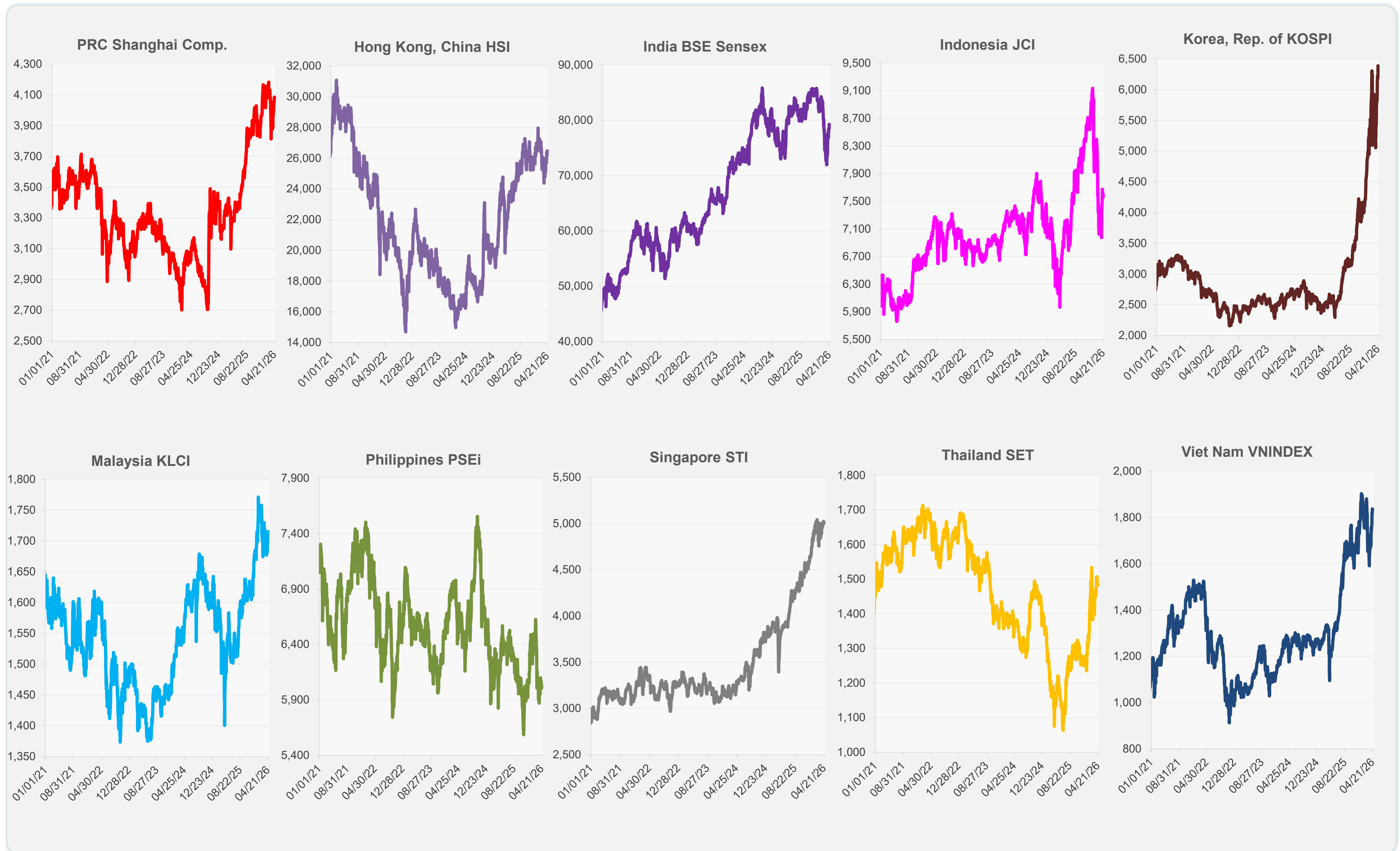
Source: Haver Analytics.

Daily Market Watch
STOCK INDEXES

| | Latest Closing | % change from Previous Day | % change from 01-Jan-26 |
|----------------------|----------------|----------------------------|-------------------------|
| US Dow Jones Ind Avg | 49,149.38 | -0.59 | 2.26 |
| US NASDAQ | 24,259.96 | -0.59 | 4.38 |
| US S&P 500 | 7,064.01 | -0.63 | 3.19 |
| UK FTSE 100 | 14,375.40 | -0.76 | 27.65 |
| EURO STOXX 50 | 5,930.25 | -0.88 | 2.40 |
| Japan NIKKEI 225 | 59,349.17 | 0.89 | 17.90 |
| Bangladesh DSEX | 5,257.41 | 0.48 | 7.06 |
| PRC Shanghai Comp. | 4,085.08 | 0.07 | 2.93 |
| Hong Kong, China HSI | 26,487.48 | 0.48 | 3.34 |
| India BSE Sensex | 79,273.33 | 0.96 | -6.94 |
| Indonesia JCI | 7,559.38 | -0.46 | -12.58 |
| Korea, Rep. of KOSPI | 6,388.47 | 3.17 | 51.59 |
| Malaysia KLCI | 1,715.33 | 0.77 | 2.10 |
| Pakistan KSE 100 | 173,492.30 | 0.51 | -1.69 |
| Philippines PSEi | 6,018.70 | 0.04 | -0.57 |
| Singapore STI | 5,014.96 | 0.22 | 7.94 |
| Sri Lanka CSEALL | 22,625.48 | 0.25 | 0.01 |
| Taipei, China TWSE | 37,605.11 | 1.75 | 29.84 |
| Thailand SET | 1,483.50 | 0.11 | 17.77 |
| Viet Nam VNINDEX | 1,833.48 | -0.20 | 2.75 |



Sources: ADB calculations using data from Bloomberg and CEIC Data Company.

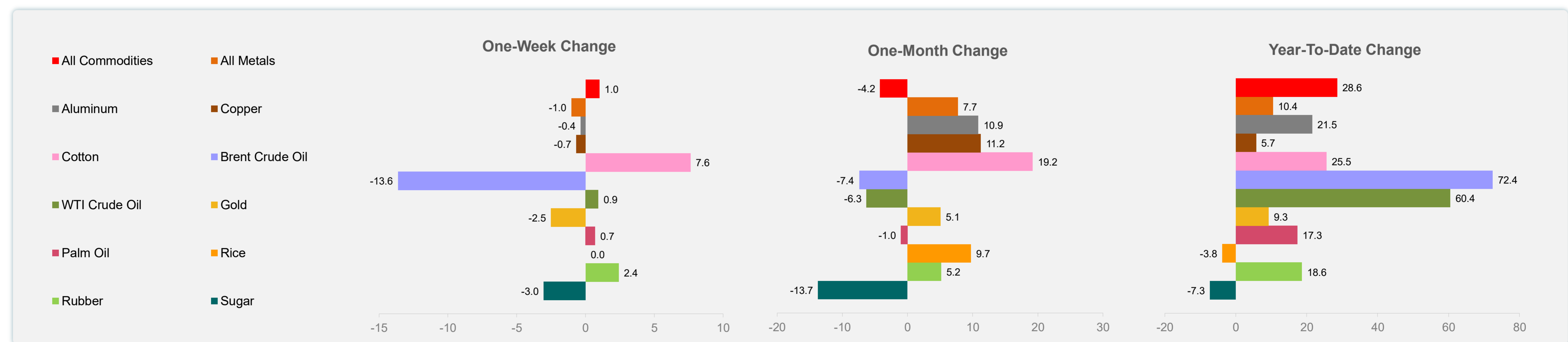
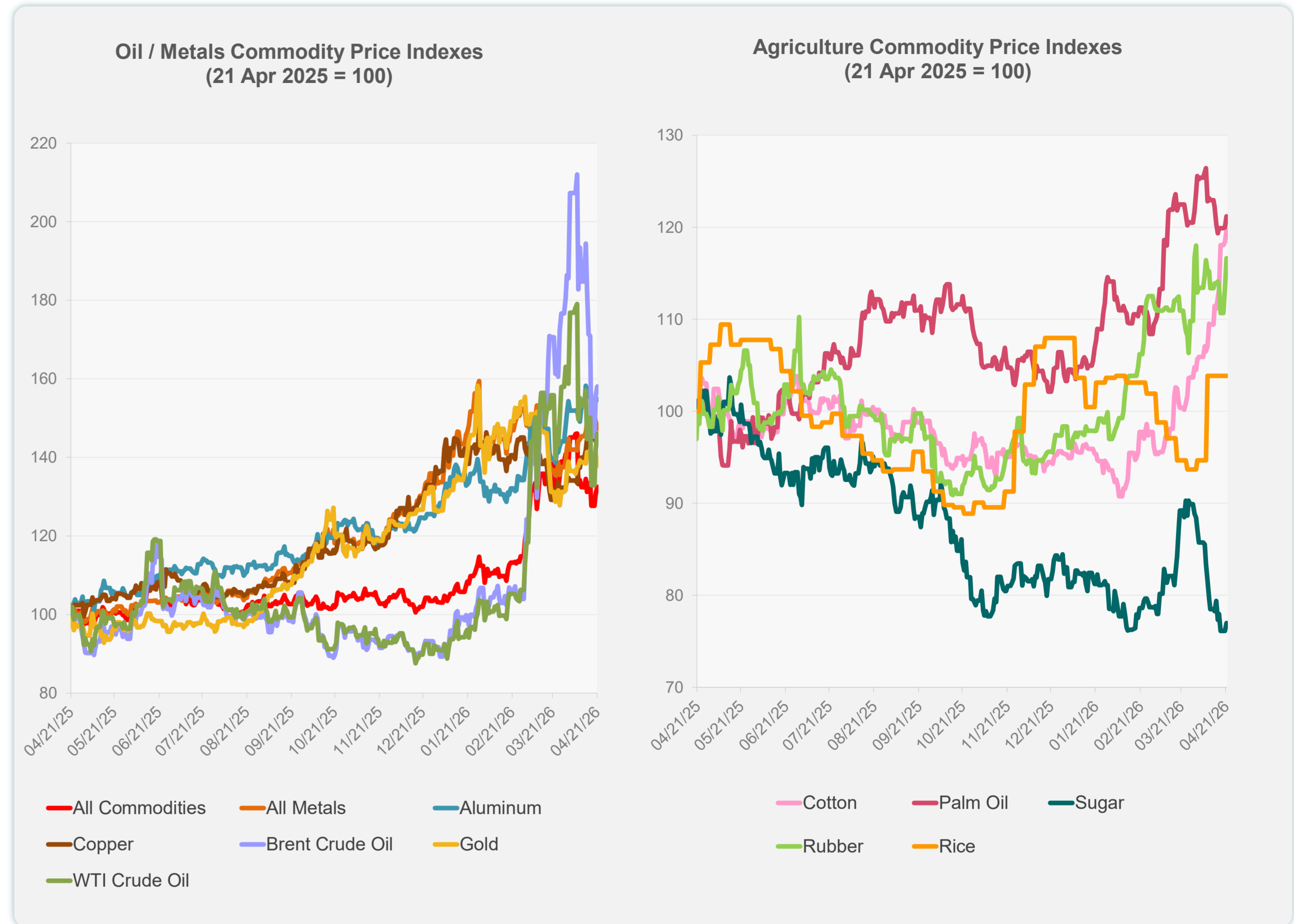


Sources: ADB calculations using data from Bloomberg and CEIC Data Company.

Daily Market Watch
COMMODITY PRICES

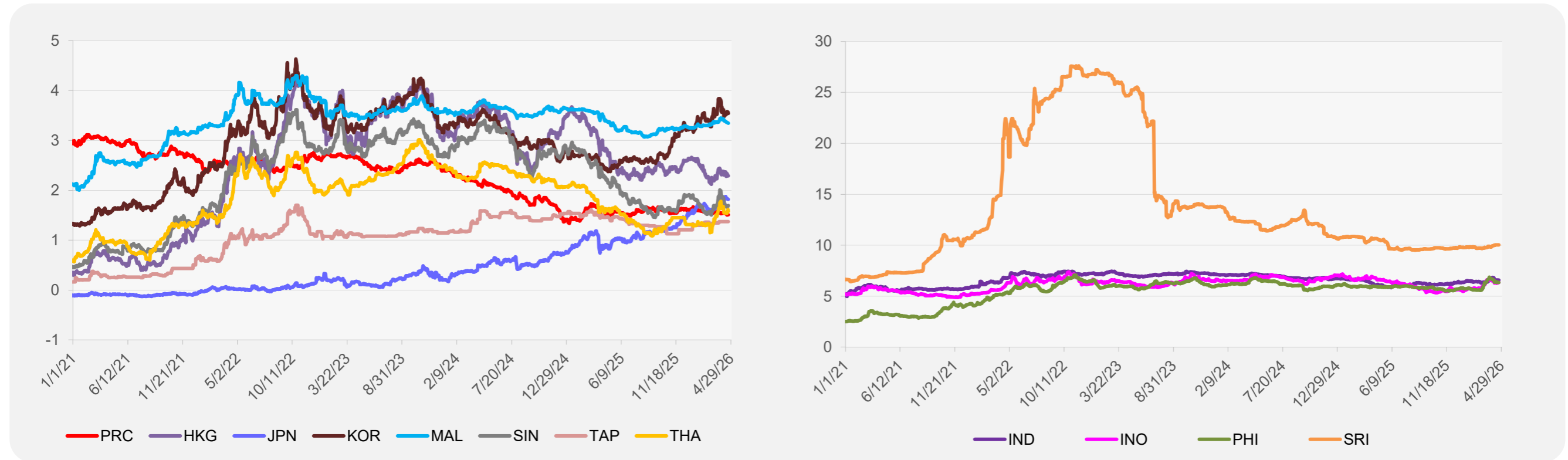
| | Unit | Latest Closing | % change from Previous Day | % change from 01-Jan-26 |
|---------------------|-------------------|----------------|----------------------------|-------------------------|
| S&P All Commodities | US\$ | 705.15 | 1.41 | 28.56 |
| S&P All Metals | US\$ | 489.93 | -1.29 | 10.40 |
| Aluminum | US\$/metric ton | 3,606.35 | 0.43 | 21.51 |
| Copper | US\$/metric ton | 13,163.82 | -0.27 | 5.70 |
| Cotton | US cents/lb | 77.86 | 1.06 | 25.54 |
| Brent Crude Oil | US\$/barrel | 107.66 | 1.55 | 72.41 |
| WTI Crude Oil | US\$/barrel | 92.13 | 2.81 | 60.45 |
| Gold | US\$/troy oz | 4,720.04 | -2.09 | 9.28 |
| Palm Oil | US\$/metric tonne | 1,136.44 | 1.02 | 17.32 |
| Rice ¹ | US\$/metric ton | 429.00 | 0.00 | -3.81 |
| Rubber ² | US\$/kg | 255.00 | 2.91 | 18.60 |
| Sugar | US cents/lb | 13.71 | 1.11 | -7.30 |

¹ Latest closing price from 8 April 2026.
² Singapore Exchange, Ribbed Smoked Sheet Rubber.

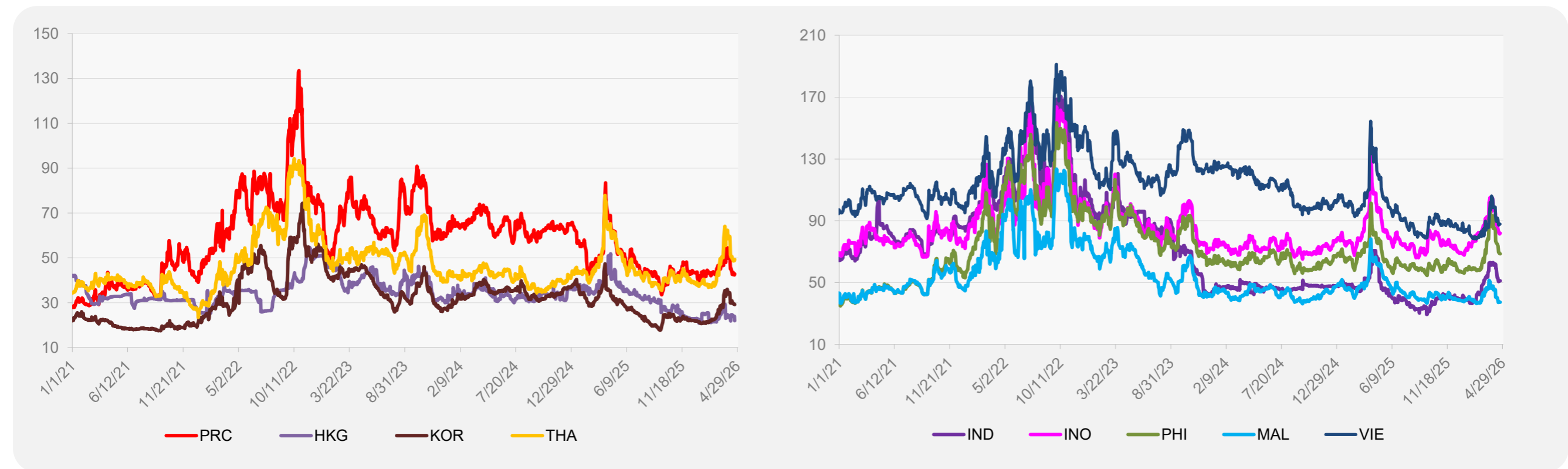


Source: ADB calculations using data from Bloomberg.

5-YEAR LOCAL CURRENCY GOVERNMENT BOND YIELDS (%)



5-YEAR CREDIT DEFAULT SWAP¹



¹ In USD and based on sovereign bonds.
Source: ADB calculations using data from Bloomberg.